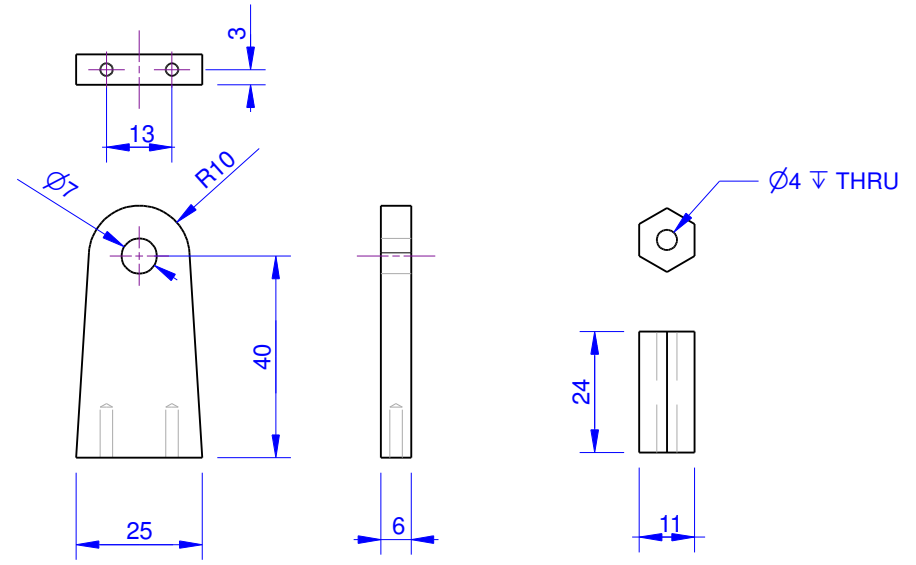
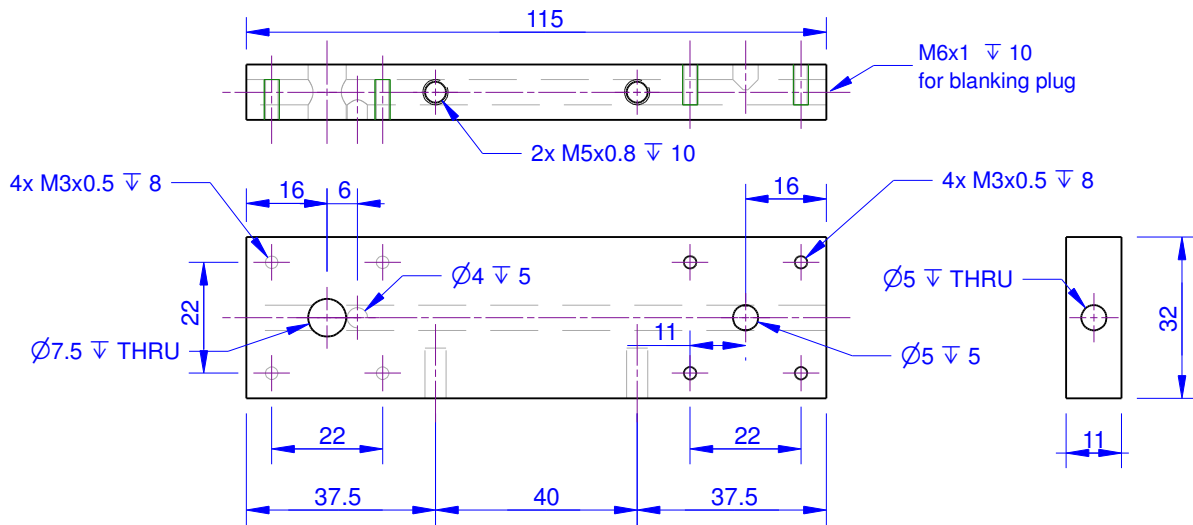


Base Plate 3mm (M.S.)

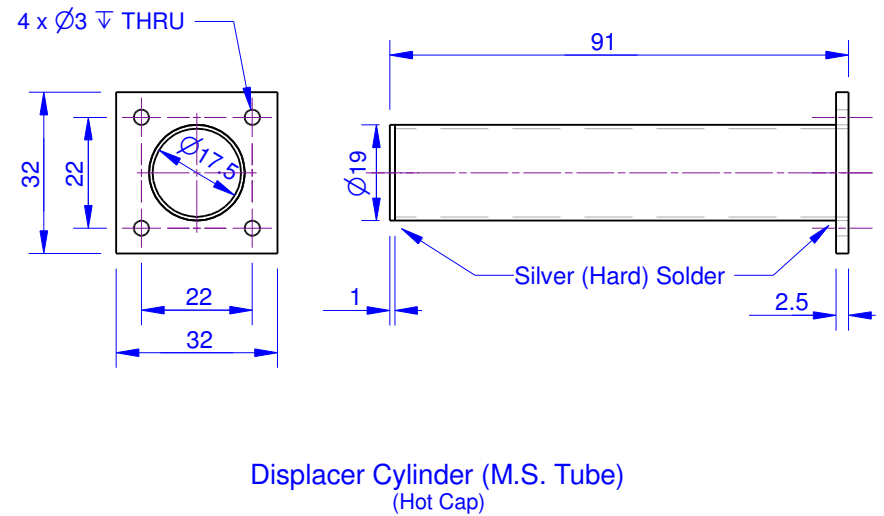


Crankshaft Support (2 off M.S.)

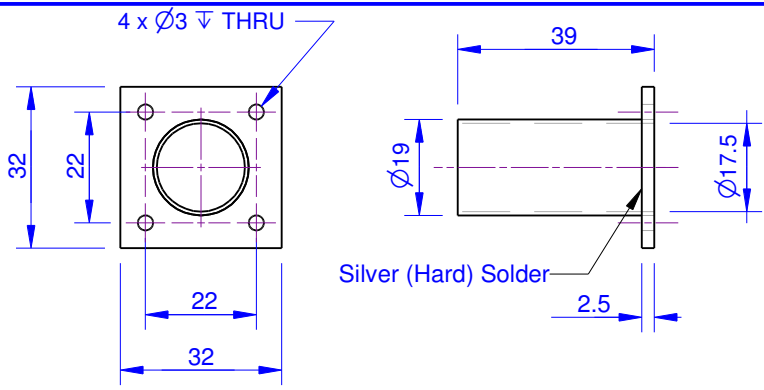
Pillar (2 off M.S.)



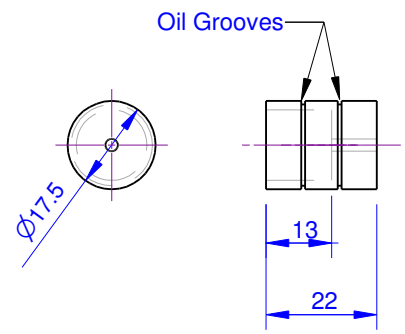
Cylinder Mounding Block (M.S.)



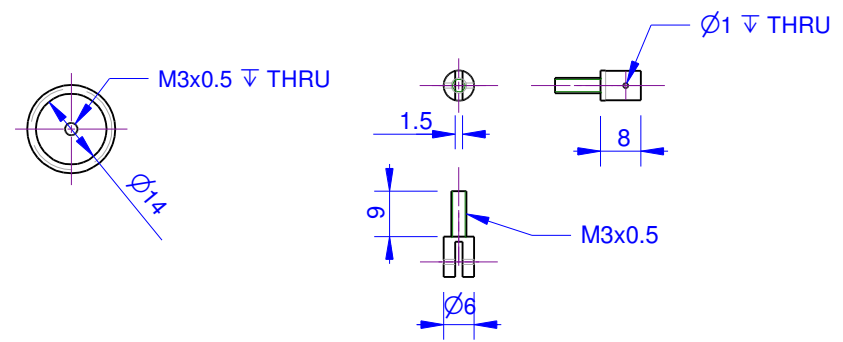
Displacer Cylinder (M.S. Tube)  
(Hot Cap)



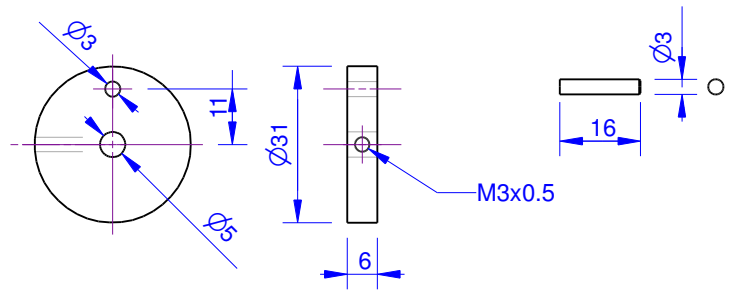
Power Cylinder (M.S.)



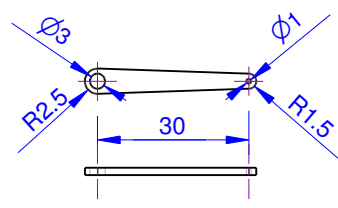
Piston (Brass or C.I.)



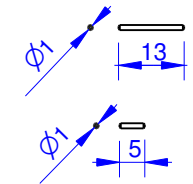
Piston Yoke (Brass)



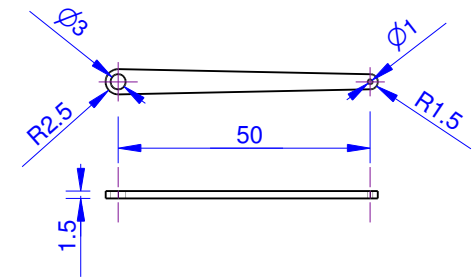
Displacer Crank & Crankpin (M.S.)



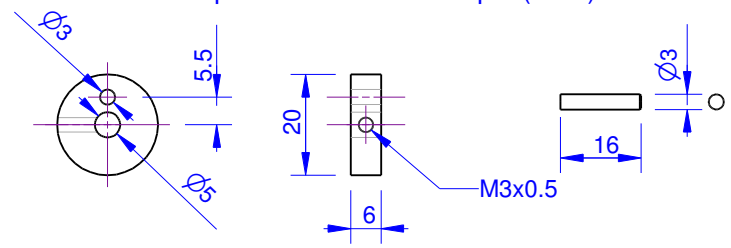
Displacer Link (M.S.)



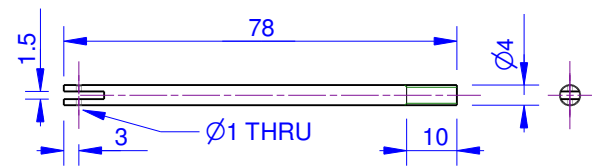
Wrist Pin & Displacer Link Pin (M.S.)



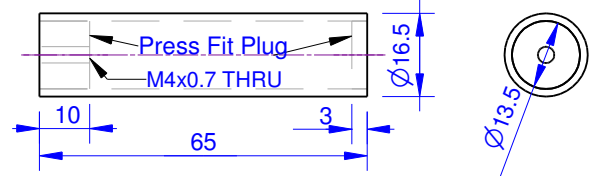
Conrod (M.S.)



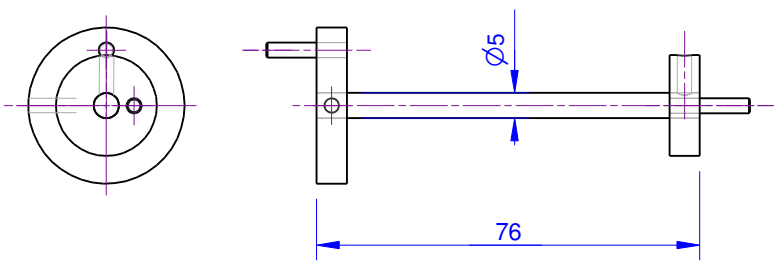
Power Crank & Crankpin (M.S.)



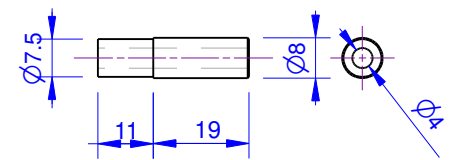
Displacer Rod (M.S.)



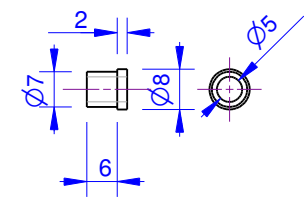
Displacer



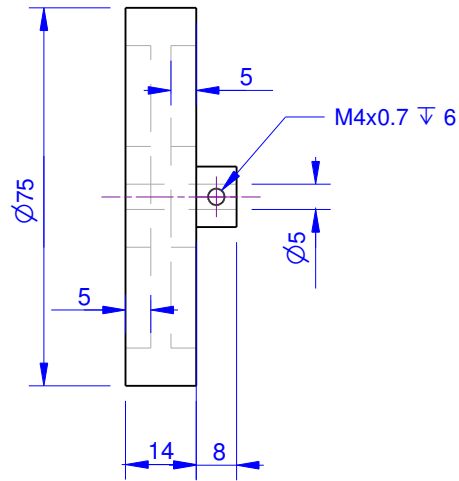
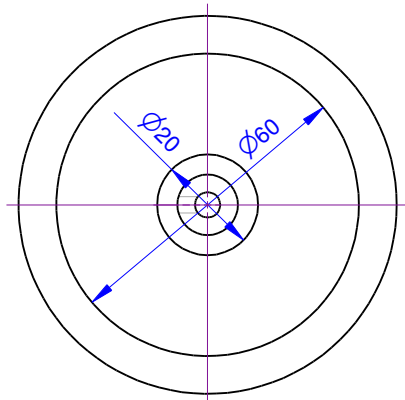
Crankshaft (M.S.)



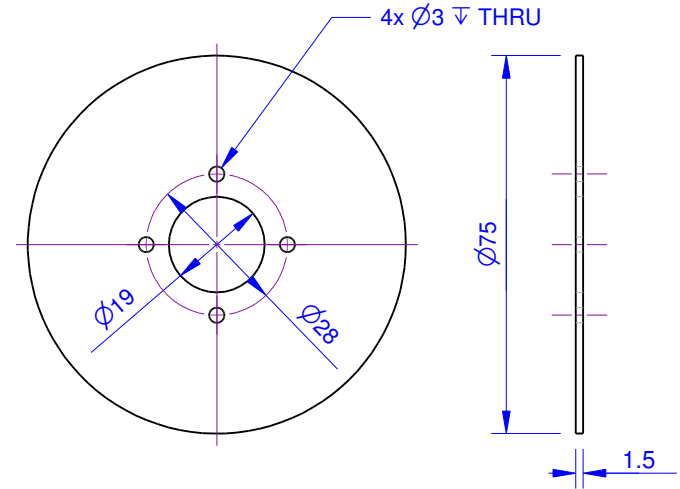
Displacer Rod Gland (M.S.)



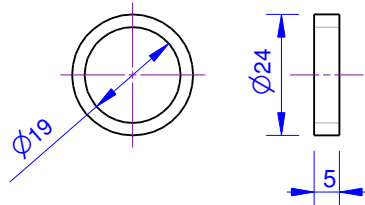
Crankshaft Bearing (2 off Brass)



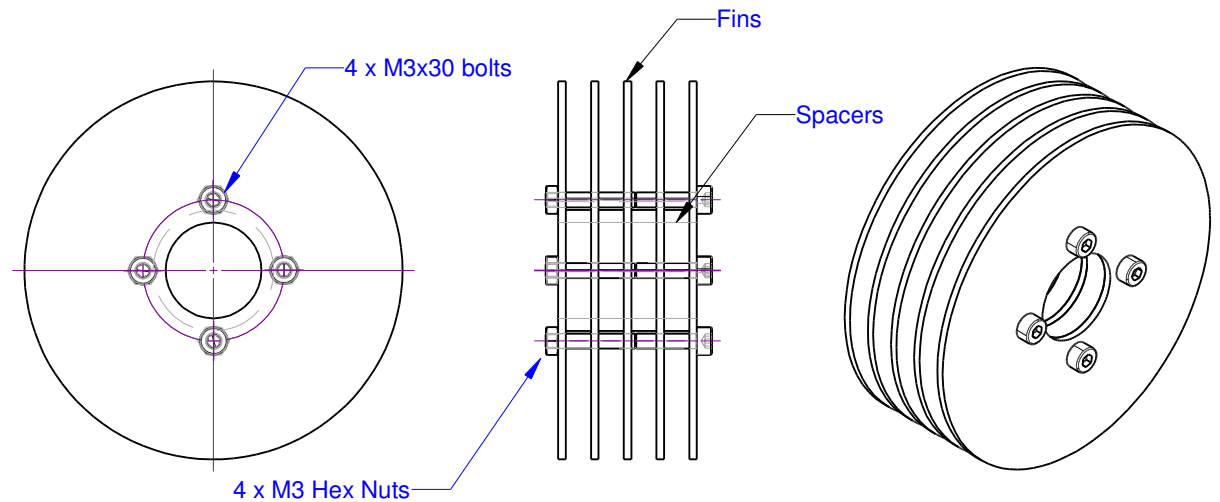
Flywheel (Brass or S.S.)



Cooling Fin (5 off Aluminium Sheet)



Cooling Fin Spacer  
(4 off Brass)



Cooling Fin Assembly  
(Slide Onto Hot Cap With Heat Transfer Compound)