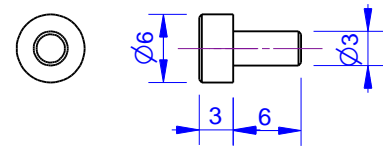
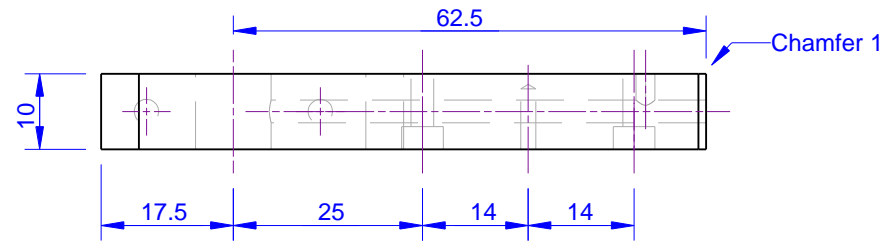
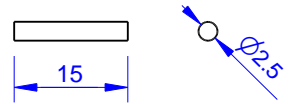
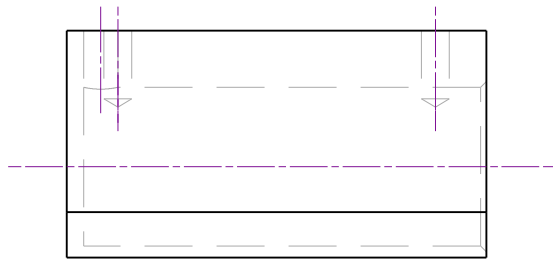


Foot
Aluminium



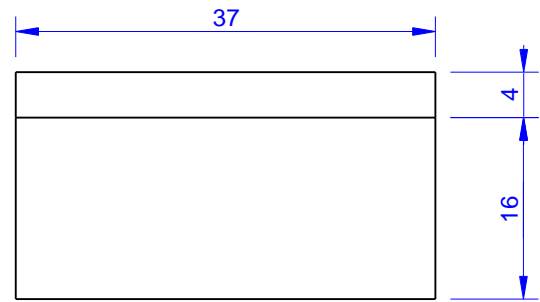
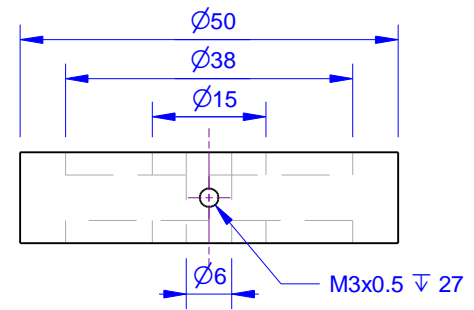
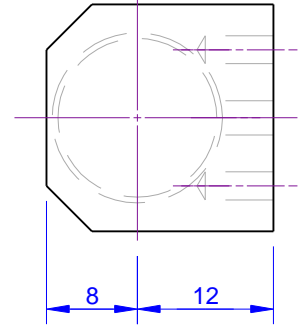
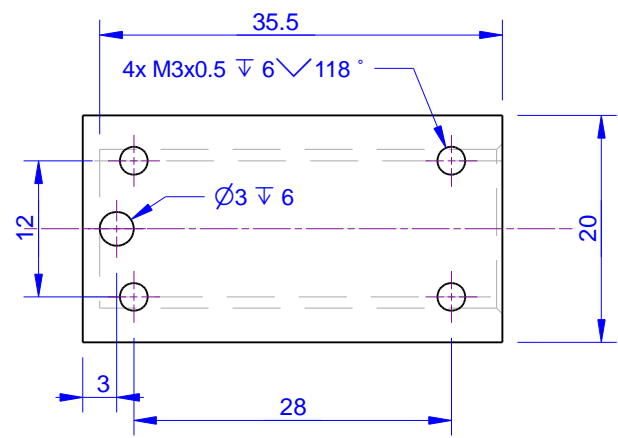
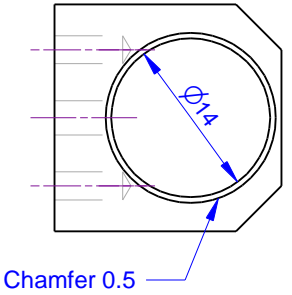
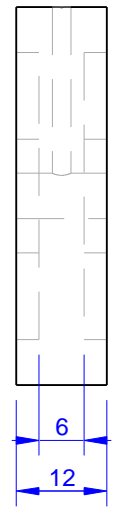
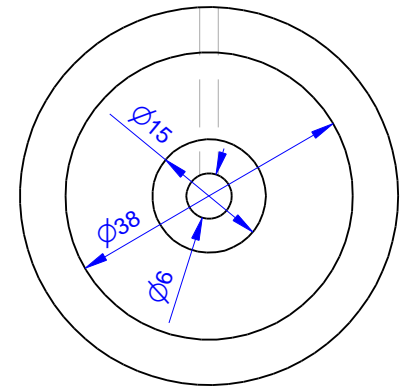
Plug
Brass

Frame
Aluminium

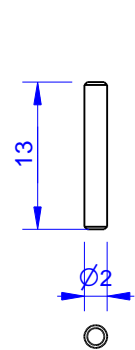


Grub Screw Pad
Brass

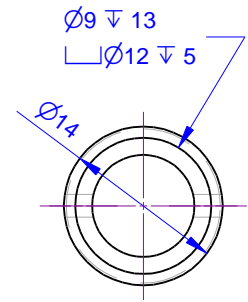
M3 x 6
Grub Screw



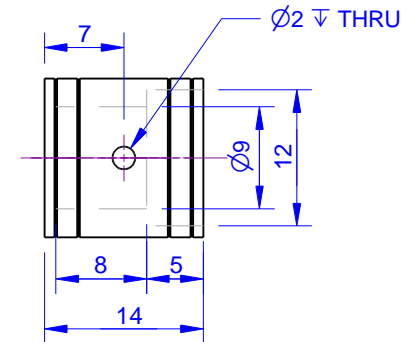
Cylinder
Brass



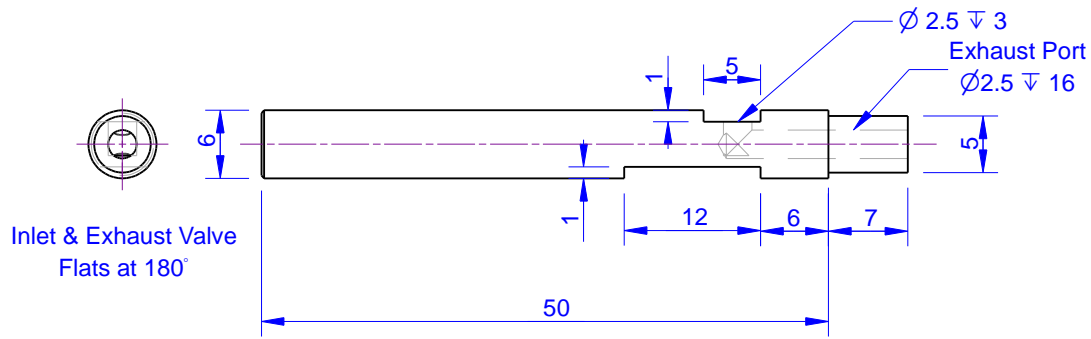
Wristpin
Stainless Steel



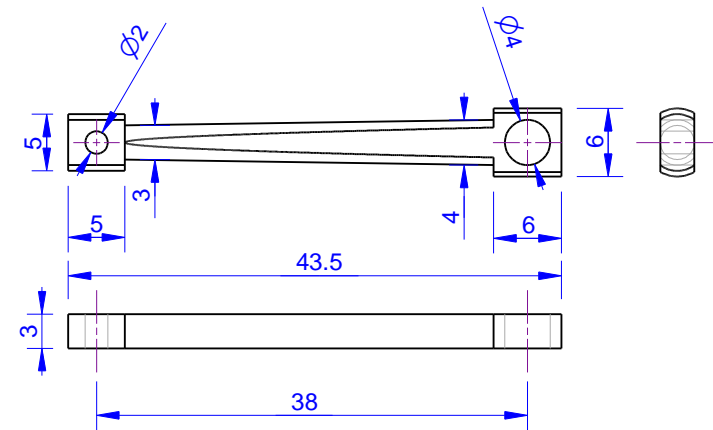
Flywheel
Brass or S.S.



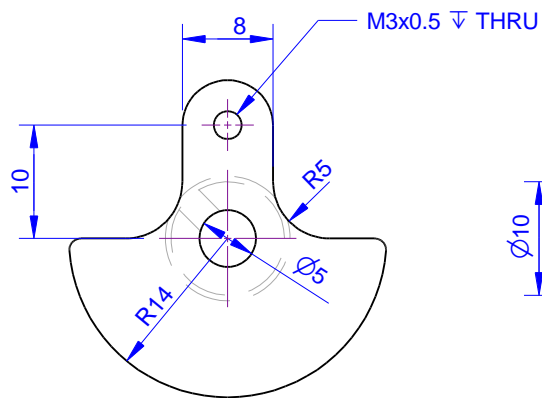
Piston
Brass



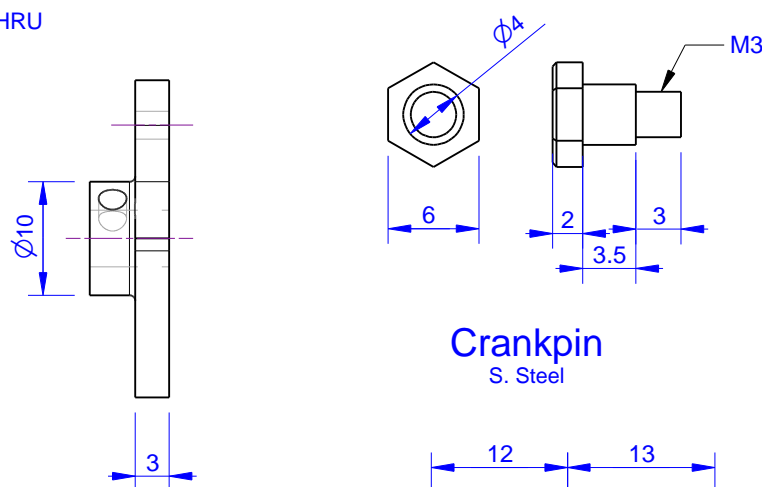
Crankshaft
Stainless Steel



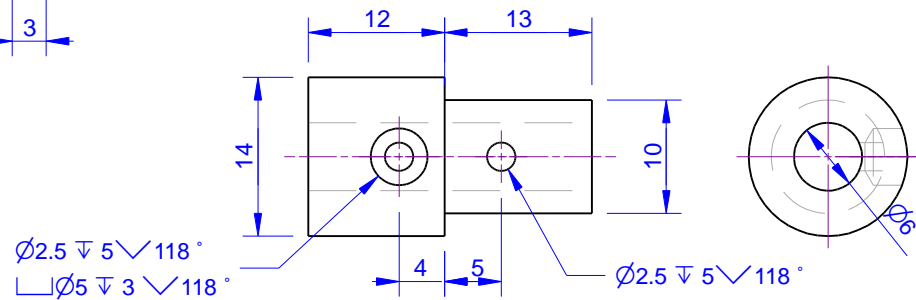
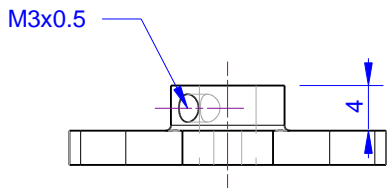
Connecting Rod
Brass or S.S.



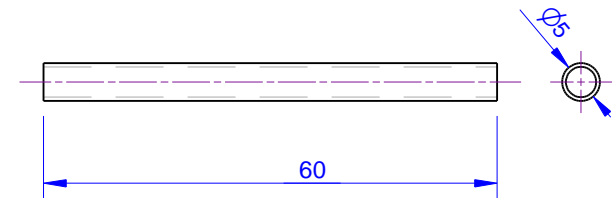
Crank
Brass or S.S.



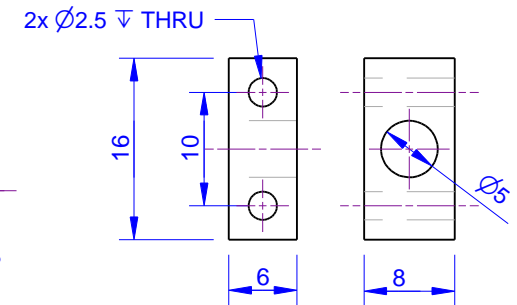
Crankpin
S. Steel



Bearing
Brass



Inlet Pipe
Brass



Inlet Pipe Support Bracket
Brass