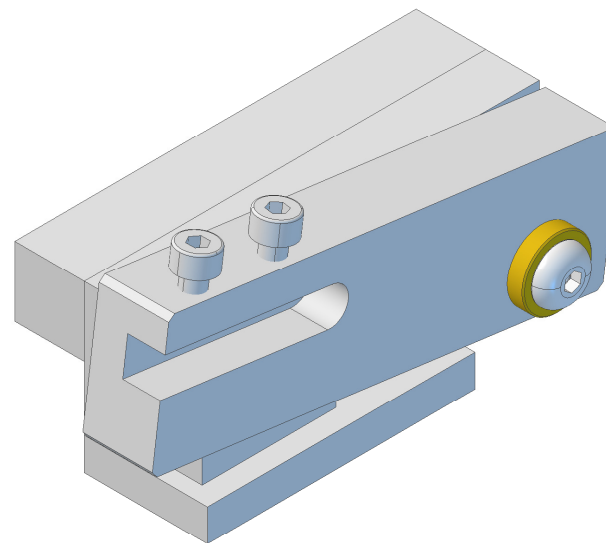
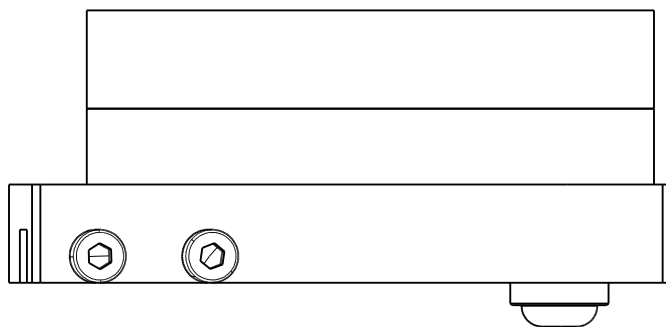
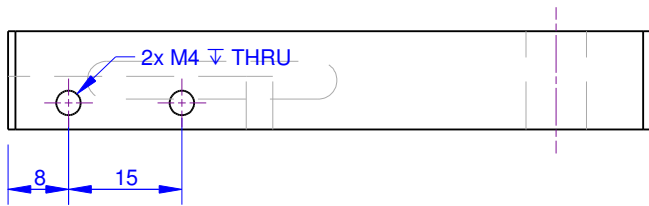
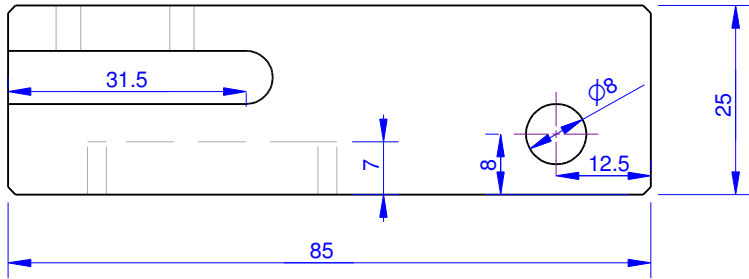
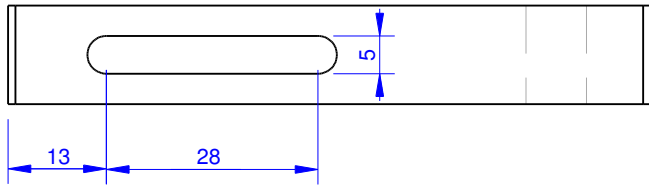


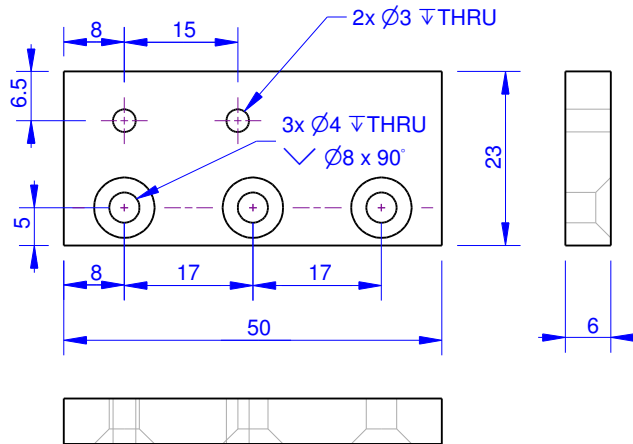
**Note:**

1. The key needs to be a good but free fit in the slot on the underside of the swing arm.
2. The shaft of the "top hat" bearing needs to be very slightly longer than the thickness of the swing arm.
3. To fit 5" centre height lathe and AXA size 100 toolpost. \*CHECK YOUR LATHE\*

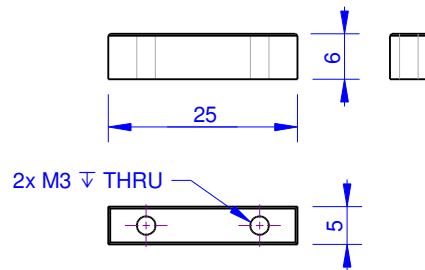
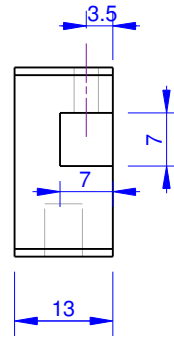




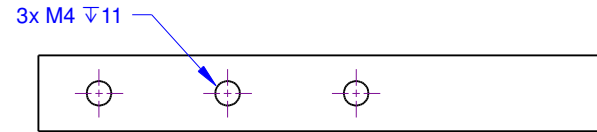
Swing Arm



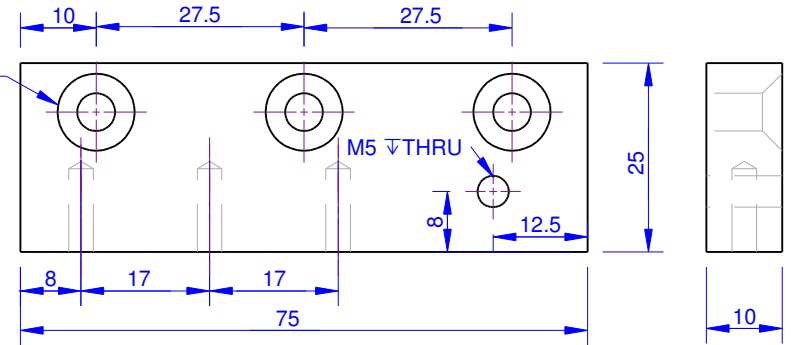
Stop Plate



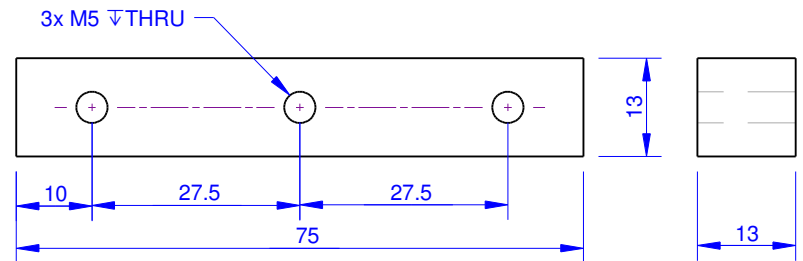
Key



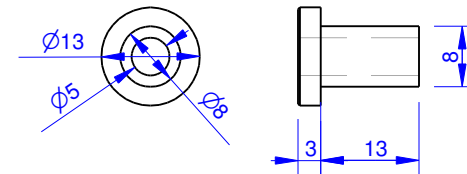
3x  $\varnothing 5$  THRU  
 $\nabla \varnothing 10.2 \times 90^\circ$



Back Plate



Clamping Block



"Top Hat" Bearing