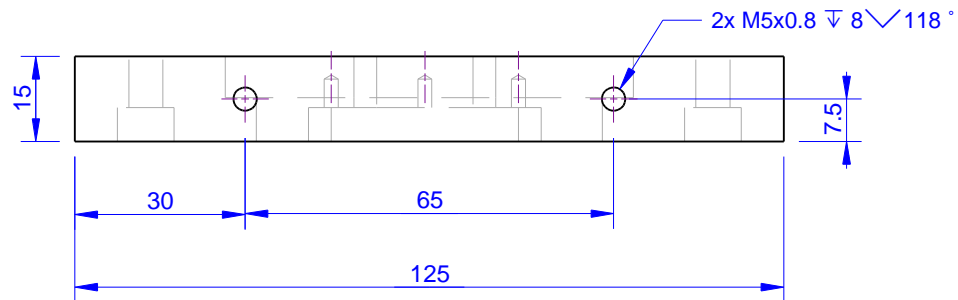
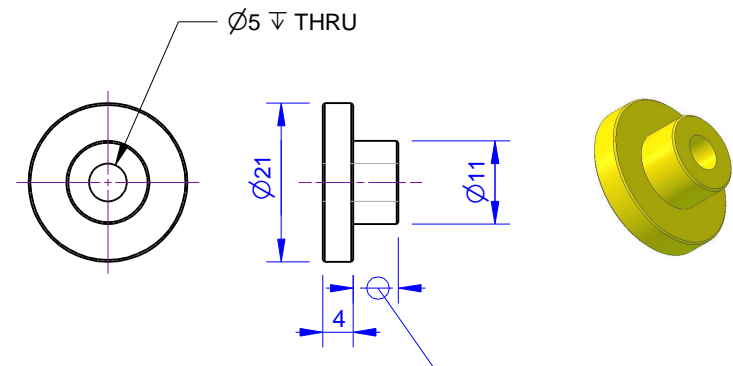
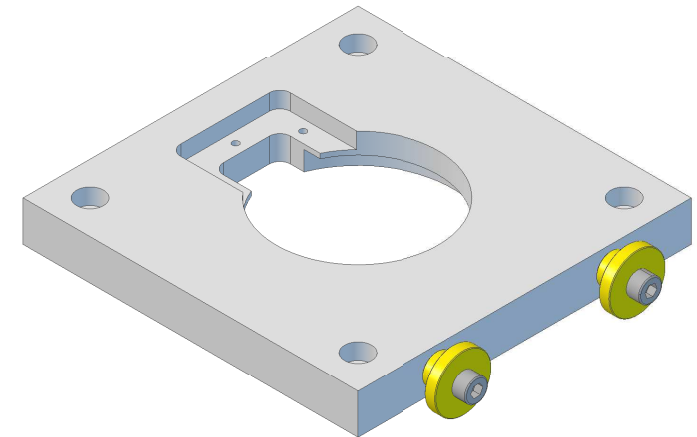
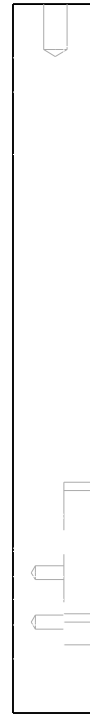


3x M3x0.5 ∇ 5 \sphericalangle 118°
or as available

Machine recess to suit
patch thickness so that
the top surface is of the
patch plate is below the
clamp plate surface



2x M5x0.8 ∇ 8 \sphericalangle 118°



\varnothing 5 ∇ THRU

Make this length to exact size
(by measuring on assembly
with clamp plate in position)